

COP16

CALI • COLOMBIA

Paz con la Naturaleza

BIODIVERSITY CONSERVATION STRATEGIES MINAS GERAIS - BRAZIL

LAURA HOMEM OLIVEIRA
Diretora de Proteção à Fauna
Instituto Estadual de Florestas de
Minas Gerais



MINAS GERAIS

The State of Minas Gerais is located in the Southeast Region of Brazil, close to the country's major decision-making centers, a territory that concentrates around 2/3 of Brazilian production.



With an area (586 thousand km²) equivalent to the territory of Spain and a population of 21 million inhabitants, Minas Gerais is made up of 853 municipalities.



The State of Minas Gerais became known as the Brazilian “water tank”, in reference to the importance of its river basins.

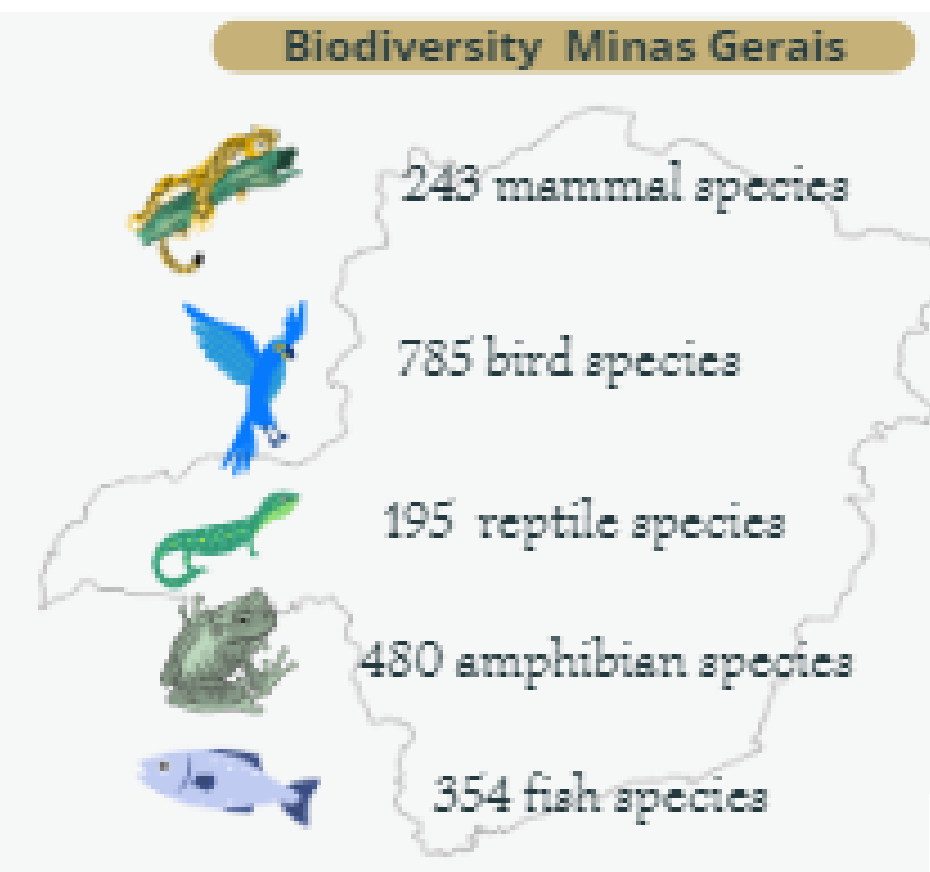
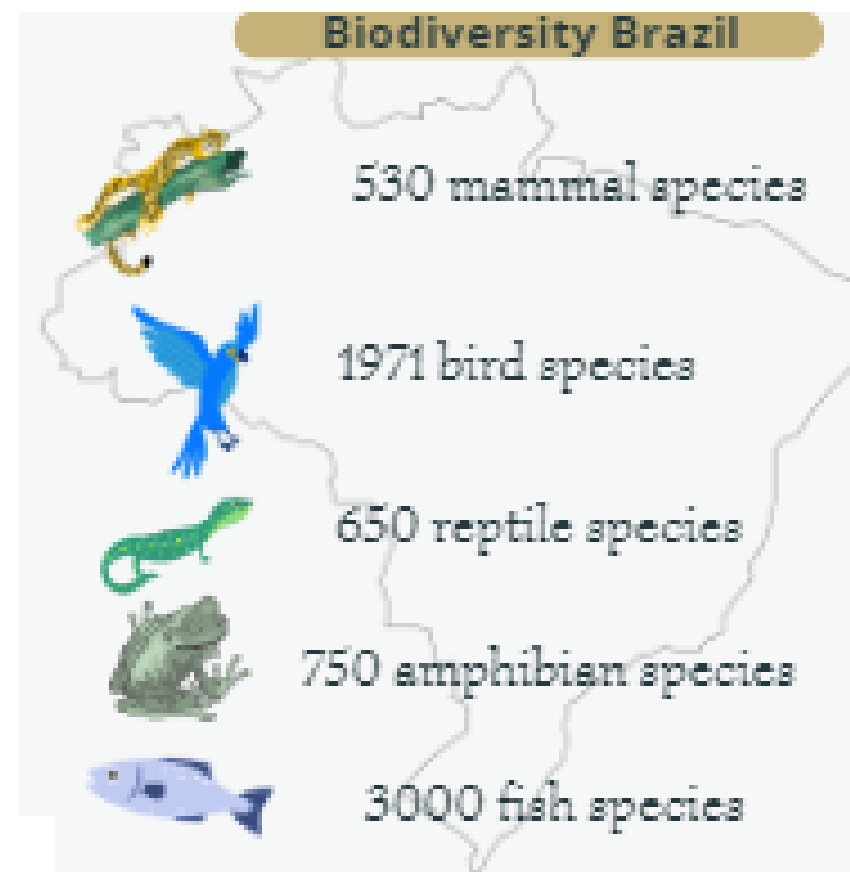
3 biomes: Cerrado (savannah), Caatinga (xeric shrubland) and Atlantic Rainforest

Montane rocky grasslands concentrate exceptional species richness and endemism

Remaining natural land cover 32,8%



MINAS GERAIS



Digital Transformation

HYDRIC RESOURCES



Regulação



Fiscalização



Regularização



Monitoramento



Prevenção



Articulação

Successful cases

“Todos somos água” (We all are water) program

Integrated remote water monitoring - MIRA

Weather Alert

Improve current strategies for regulating, controlling and monitoring water resources, incorporating innovative initiatives and new technologies

Innovative projects aim to ensure water security for future generations



FOREST RESTORATION



CONSERVATION

Sucessful cases

Native vegetation cover preserved in Minas Gerais

Conservation Units

Copaíbas Project

Atlantic Forest Conection

Mantiqueira Conservation plan

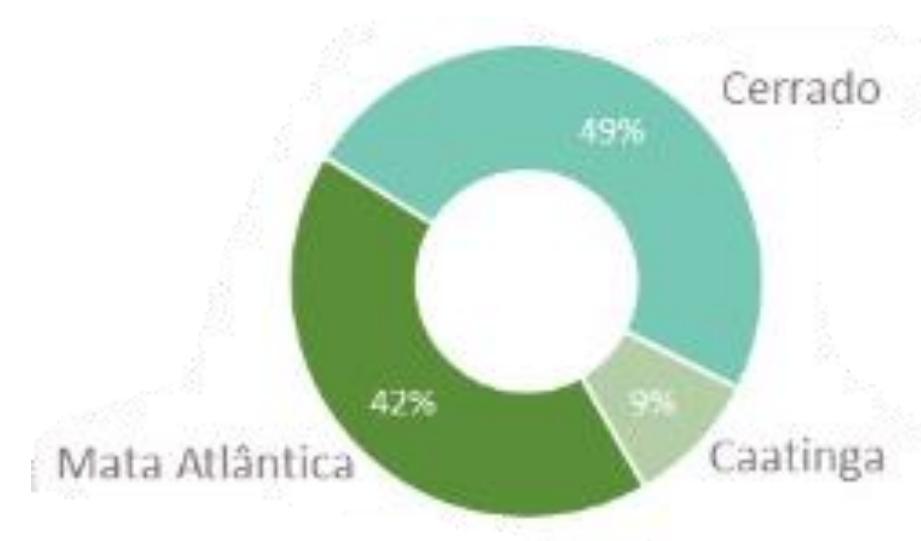
200,000 km² of native vegetation cover preserved on public and private lands

Areas corresponding to approximately 1.6x the territory of Portugal



95 conservation units in Minas Gerais, 80% of them under full protection. There are 23.8 thousand km² protected in conservation units.

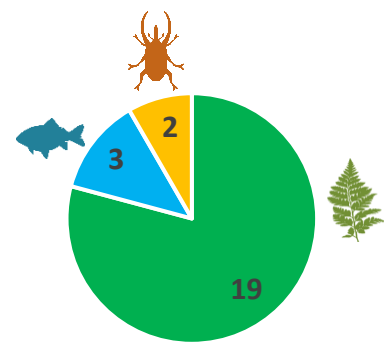
284 private reserves
1,130 km²



Plano de Ação Territorial – PAT for the Conservation of Endangered Species

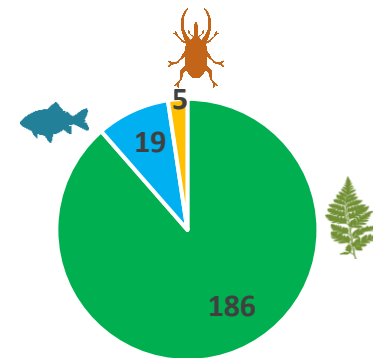
PATs are national instruments for conservation in compliance with national and international biodiversity targets. They are included in the scope of the GEF Pro-Species Project and consider Critically Endangered species (CR) that are not covered by any official conservation instrument (defined as CR Gaps). These plans aim to bring a territorial focus, encompassing the diversity, needs and opportunities of each territory

PAT Espinhaço Mineiro



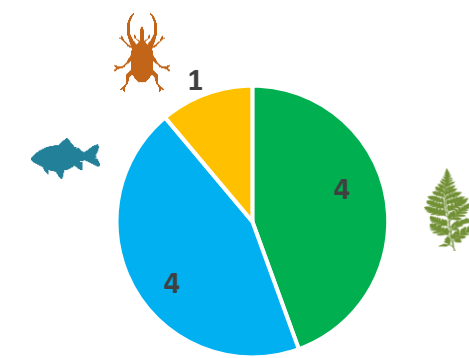
Portaria IEF nº 141/2020:
Cover Minas Gerais
Area of 105,251 km²
Approximately 1,800 threatened species benefited.
No. of actions planned/under implementation: 51

PAT Capixaba-Gerais



Portaria IEF nº 75/2021:
Covers Espírito Santo and the northeast of Minas Gerais
Area of 74,262 km²
Approximately 200 threatened species benefited.
No. of actions planned/under implementation: 40

PAT Veredas Goyas-Geraes



Portaria IEF nº 08/2023:
Covers the surroundings of the Federal District in Goiás and the northwest of Minas Gerais
Area of 64,424 km²
Around 100 threatened species benefited.
• number of actions planned/under implementation: 31

Plano de Ação Territorial – PAT for the Conservation of Endangered Species

List of Invasive Exotic Species

The PAT Capixaba-Gerais highlights the preparation of the list of invasive alien species in the State of Minas Gerais, with the aim of enabling environmental management, both for actions to restore natural areas and for the protection of endangered species. Its construction throughout 2024 had the contribution of several stakeholders, including experts and interested parties from the civil community, resulting in approximately 1,700 occurrence data in the state.

Total species: 192
Animals: 119
Plants: 72
Algae: 1



Acacia mangium

Fonte: Sylvia Ziller



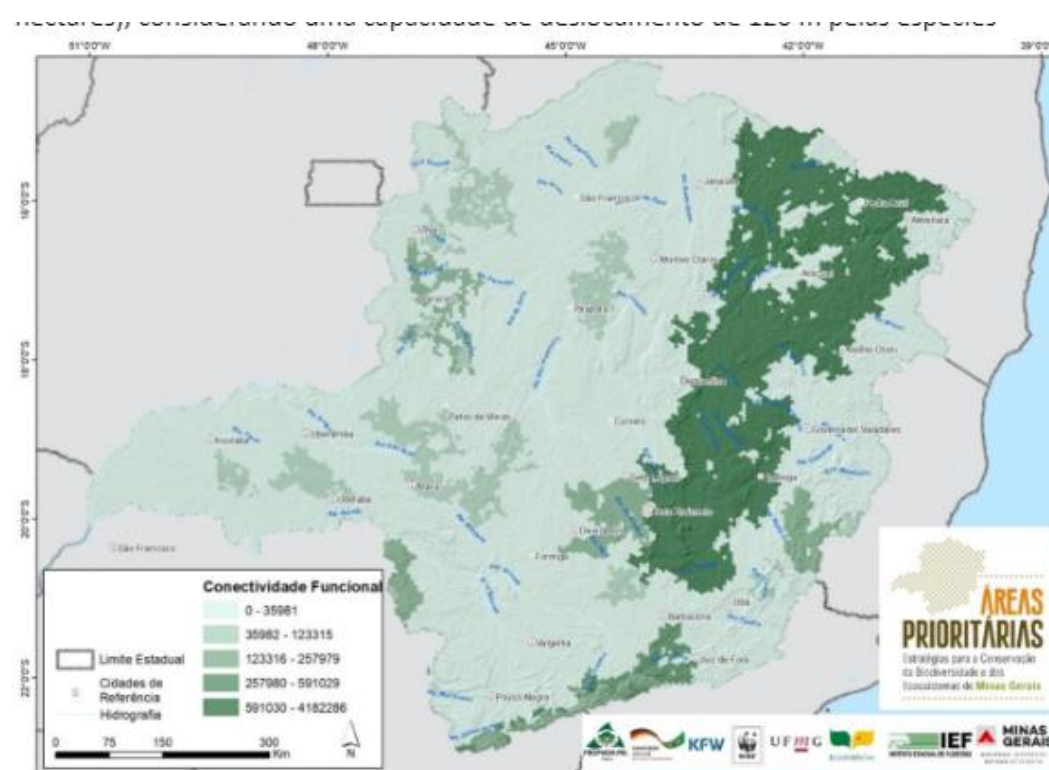
Apis mellifera

Fonte: Internet

REGIONAL BIODIVERSITY STRATEGY AND ACTION PLAN

SPATIAL PLANNING

- Integration of spatial planning instruments
- Priority areas:
 - Biodiversity and Ecosystem Goods and Services
 - Water Security and Green Infrastructure
 - National and Regional Endangered Species Action Plans



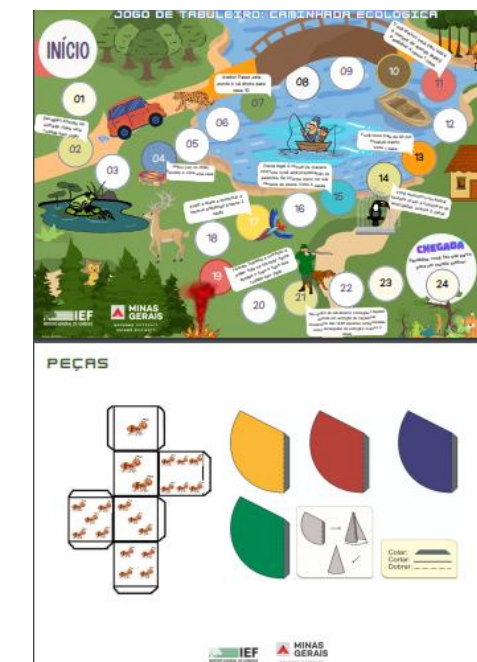
Fonte: Elaboração dos autores (2020)

- National System of Protected Areas (SNUC)
- Legally required set-asides in privately owned land – National Forest Act

ENVIRONMENTAL EDUCATION

The Young Sustainable Miners Program was implemented in 2021 and is held annually in partnership with the Municipal Departments of Education and the Municipal Department of the Environment of the municipalities of Minas Gerais.

The Fauna das Gerais Project, focused on wildlife, seeks to interest children and young people in learning about the diversity of fauna in the state. Learning about native fauna is an important step towards environmental education and social engagement in environmental protection and combating wildlife crimes.



RAMSAR SITES

Since Brazil joined the Convention on Wetlands of International Importance, or Ramsar Convention, a treaty held in the city of Ramsar, Iran, in 1971, with several countries, with the aim of preserving environments called wetlands, 12 (twelve) **Brazilian**

Minas Gerais, initially represented by the Rio Doce State Park, is among the eight Brazilian states that have a Ramsar site, since February 26, 2010. The Park is the first conservation unit in Minas Gerais, created in 1944. It covers the largest tropical forest in the state, with forty lakes.

Foto: Rodrigo Teribele



Sítio Ramsar Parque Estadual do Rio Doce

Foto: Evandro Rodney



Sítio Ramsar Parque Estadual do Sumidouro

Minas Gerais expanded its representation among the Ramsar Sites on July 5, 2017 with the recognition of the Lund Warming Site, located in the APA Carste Lagoa Santa. The new Site has an area of 23,865.44 ha. The Lund Warming Site is composed of two important biomes: the Atlantic Forest and the Cerrado, which represent two Biodiversity Hotspots.

WILDLIFE FROM INSPECTION TO REHABILITATION

In Minas Gerais, environmental inspections are carried out by the State Secretariat for the Environment and Sustainable Development (SEMAD) and, through a technical cooperation agreement, by the Military Police (PMMG).

Percentage of free-range wild animals



The seized animals are sent to the Wildlife Triage and Rehabilitation Centers (CETRAS), which are facilities authorized to receive, identify, mark, triage, evaluate, recover, rehabilitate and dispose of wild and exotic animals. Animals can also be voluntarily handed over to CETAS by private individuals or collected from rural and urban areas when they are at risk or injured.

OVERCOMING DISASTERS – MARIANA - MG

Conservation of aquatic fauna and flora has been included in the Action Plan for the Conservation of Aquatic Biodiversity (PABA), which is in its 2nd year of monitoring, with 50 actions for the conservation of species in the basin. Analyzed the progress of the 50 actions currently in the PABA.

- It is worth noting that 03 actions were completed, 35 actions are in progress, 09 actions are planned/starting and 03 actions have not been started.



The conservation of terrestrial fauna and flora has been considered in the Action Plan for the Conservation of Terrestrial Biodiversity, which is now in its 4th year of monitoring, with 49 actions and 12 strategies for the conservation of 365 species (331 of which are threatened with extinction). I

- 7 actions were completed, 32 actions are in progress, 1 action is planned and about to start, 5 actions are on hold and 1 action has not been started/planned.
- It is worth noting that among the completed actions, records of the distribution of target species from studies in the Doce River basin were compiled, such as data from the Rapid Ecological Assessment campaigns and the Terrestrial Biodiversity Monitoring Program.

OVERCOMING DISASTERS – BRUMADINHO - MG

Over the 6 years since the dam burst, many wildlife management and monitoring actions have been carried out, such as:

- Trampled Wildlife Monitoring Program;
- Wildlife Rescue Program in Emergency Works;
- Violet care at the Veterinary Hospital and at the wildlife shelter at “Fazenda Bom Retiro”;
- Medium and Large Mammal Monitoring Program;
- Primate Monitoring Program;
- Environmental Damage Diagnosis Program on the Biotic Environment;
- Milestone Zero Recovery Process Monitoring Program.

INFORMATIONS

Sigla	Instituição	Link	Endereço	E-mail	Telefone
IEF	Instituto Estadual de Florestas	http://www.ief.mg.gov.br	Rodovia Papa João Paulo II, 4.143 - Serra Verde - Cidade Administrativa - Belo Horizonte/MG	dg.ief@meioambiente.mg.gov.br	(31) 3915-1171
FEAM	Fundação Estadual do Meio Ambiente	http://www.feam.br	Rodovia Papa João Paulo II, 4.143 - Serra Verde - Cidade Administrativa - Belo Horizonte/MG	ana.silveira@meioambiente.mg.gov.br	(31) 3915-1231
IGAM	Instituto Mineiro de Gestão de Águas	http://www.igam.mg.gov.br	Rodovia Papa João Paulo II, 4.143 - Serra Verde - Cidade Administrativa - Belo Horizonte/MG	dgigam@meioambiente.mg.gov.br	(31) 39151253
SEMAD	Secretaria de Estado de Meio Ambiente e Desenvolvimento Sustentável	http://www.meioambiente.mg.gov.br	Rodovia Papa João Paulo II, 4.143 - Serra Verde - Cidade Administrativa - Belo Horizonte/MG	secretario.semad@meioambiente.mg.gov.br	(31) 3915-1905

THANK YOU, GRACIAS, OBRIGADA!

Instituto Estadual de Florestas –
IEF

<http://www.ief.mg.gov.br/>
dg.ief@meioambiente.mg.gov.br

Realização



ABEMA

Associação Brasileira de Entidades Estaduais de Meio Ambiente

Patrocinadores

codeX SCCON
GEOESPATIAL

SOS MATA
ATLÂNTICA

Fundação
GrupoBoticário

CDP
INCLUSIVE IMPACT ACTION

The Nature
Conservancy
Brasil

MINISTÉRIO DO
MEIO AMBIENTE E
MUDANÇA DO CLIMA

GOVERNO FEDERAL
BRASIL
UNIÃO E RECONSTRUÇÃO