

COP16

CALI • COLOMBIA

Paz con la Naturaleza

EARLY DETECTION AND RAPID RESPONSE FOR INVASIVE EXOTIC SPECIES IN SANTA CATARINA

ELAINE ZUCHIWSCHI
SANTA CATARINA / IMA-SC



INSTITUTE OF ENVIRONMENT OF SANTA CATARINA STATE



Subordinated to Secretary of Environment and Green Economy - SEMAE

Executive Agency of the Environmental Policy of Santa Catarina

Established in 1975 – among the most old environmental agency of Brazil

Responsible for:

- **Environmental Licensing**
- **Environmental Inspection**
- **Conservation of Biodiversity**
- **Environmental Emergency and Liabilities**
- **Environmental Information and Measurements**



Direction of Biodiversity and Forests - DBIO

Management of Biodiversity and Forests - GEBIO

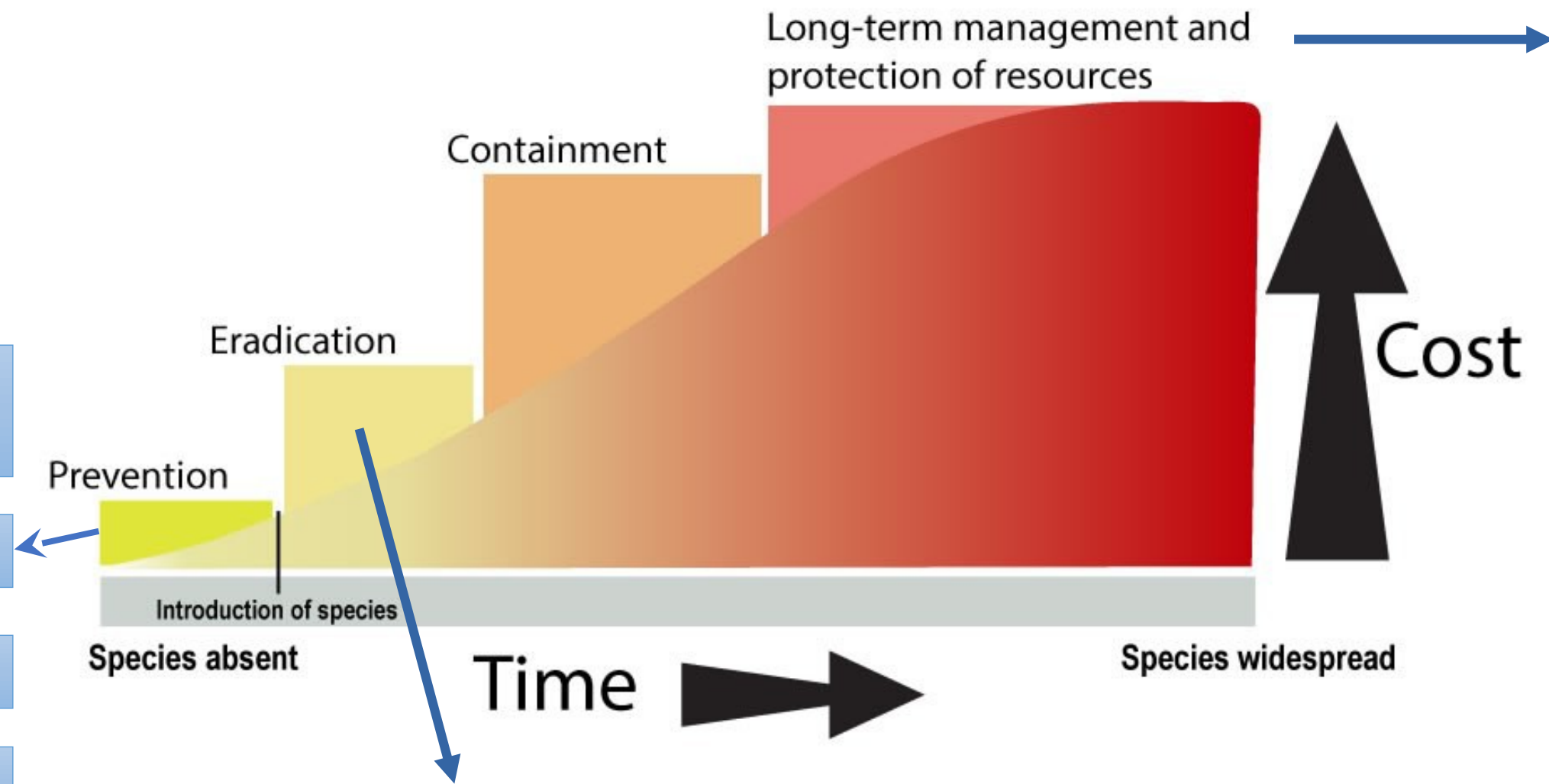


PEEEI

Programa Estadual de
Espécies Exóticas Invasoras
do Estado de Santa Catarina

Actions started in 2009 and Program was formalized in 2016 (Portaria IMA 116/2016)

The INVASION Curve



List of present invasive exotic species

Erradication and Control Plans

Regulation for use

List of Imminent Risk Species

Risk Analysis

Public Information

Inspection

Early Detection and Rapid Response



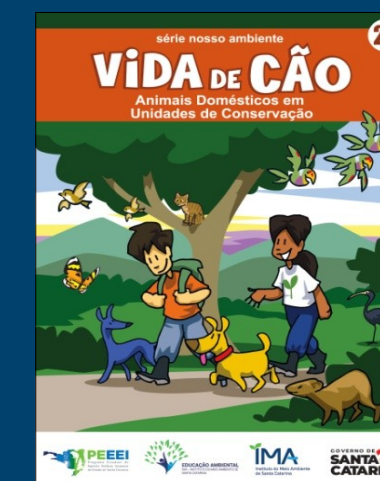
Fonte: National Park Service/
U.S Department of the Interior



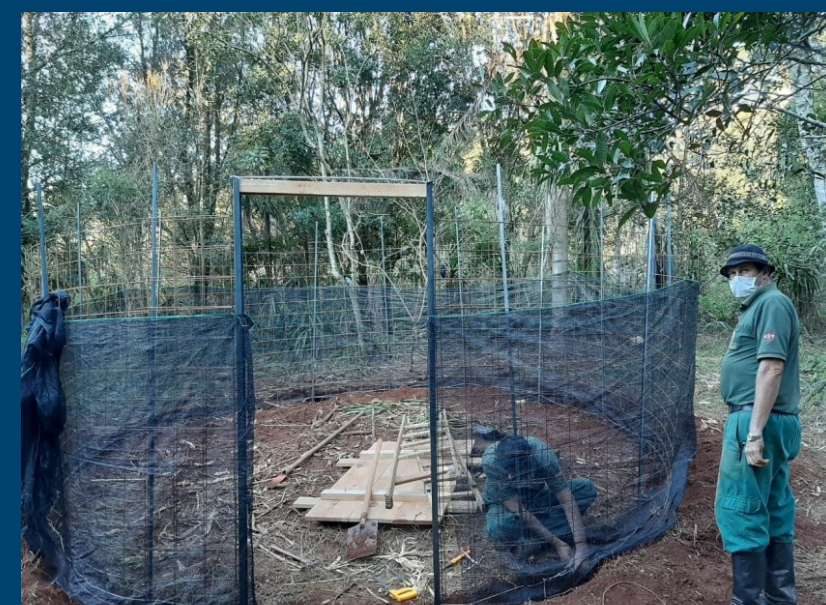
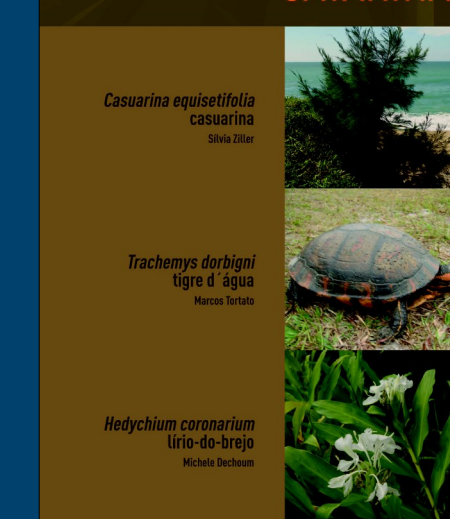
INVASIVE EXOTIC SPECIES PROGRAM GUIDELINES



- Prevention, early detection and rapid response
- Public Information
- Technical Training
- Sub-legal norms and public policies
- Eradication, control and monitoring



LISTA DE ESPÉCIES EXÓTICAS INVASORAS NO ESTADO DE SANTA CATARINA



Implementation of EDRR Program in the PAT Planalto Sul territory



- IESs Programs of Rio Grande do Sul e Santa Catarina
- Territorial Action Plan for the Conservation of Endangered Species of the Southern Plateau – PAT Planalto Sul
- Pró-espécies – Todos Contra a Extinção Program of the Ministry of Environment and Climate Change of Brazil
- Consultant Silvia Ziller hired by the Pró-espécies

Espécies alvo:

- Raras
- Pouco conhecidas
- Requerem pesquisas

5 espécies
FAUNA

17 espécies
FLORA

Municípios:
27 RS e 16 SC

General objective of TAP

Conservation of biodiversity in the Planalto Sul Territory, considering biological, social, cultural and economic aspects, with emphasis on focal species



GOVERNO DO ESTADO
RIO GRANDE DO SUL
SECRETARIA DO MEIO AMBIENTE
E INFRAESTRUTURA



Instituto do Meio Ambiente
de Santa Catarina

Implementation of EDRR Program in the PAT Planalto Sul territory



→ Developing the Program of Early Detection and Rapid Response – EDRR

→ Carrying out theoretical-practical training for key actors for the implementation of the EDRR Program

Program of Early Detection and Rapid Response – EDRR

PREPARATION PHASE

- 1 - Structuring of the Management Nucleus – **STRUCTURED**
- 2 - Beginning of the formation of the Support Network - **IN PROGRESS**
- 3 - Beginning of the formation of the Collaborators Network - **IN PROGRESS**
- 4 - Preparation of program instruments - **PARTIALLY AVAILABLE**

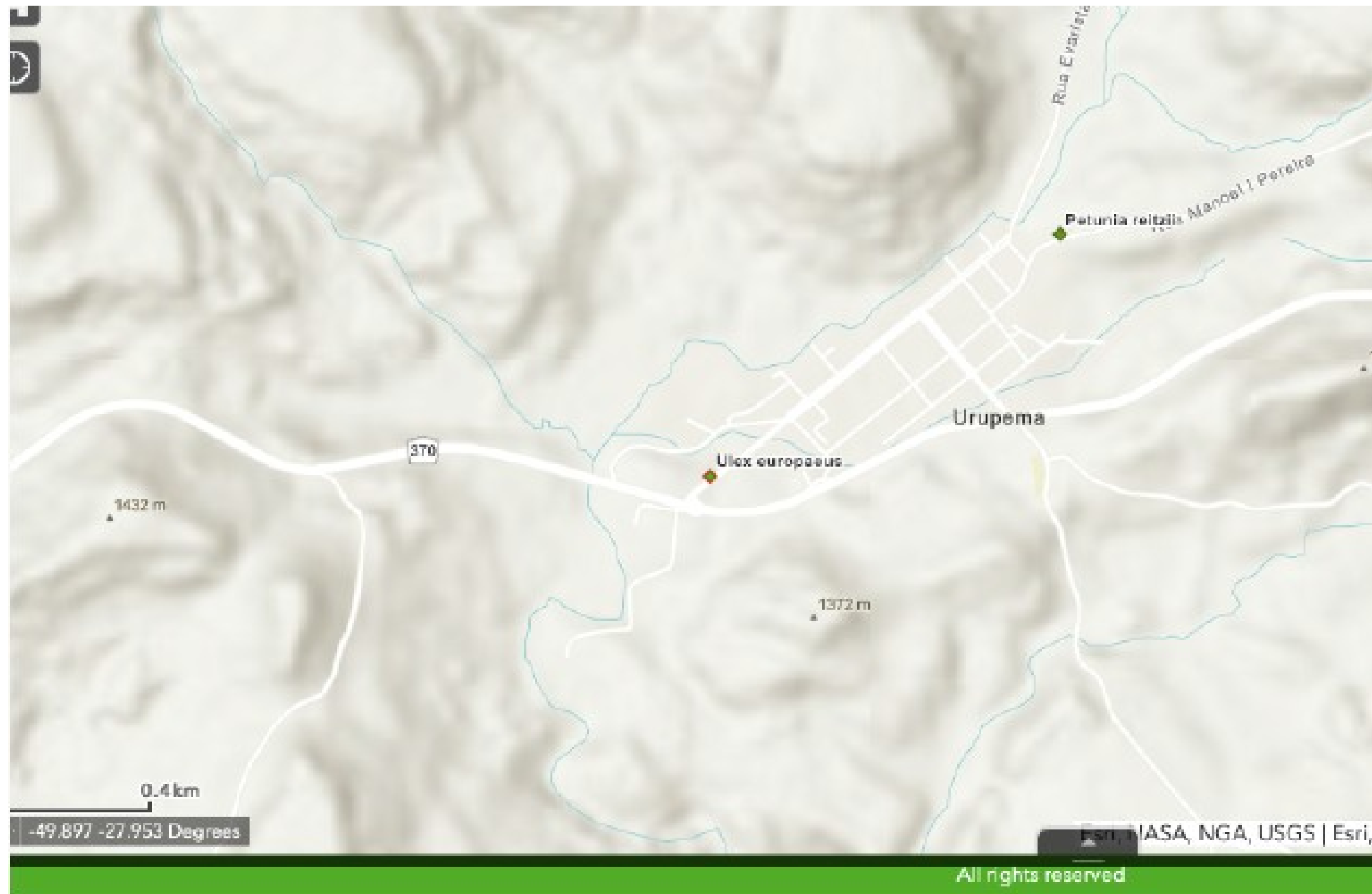
PROGRAM INSTRUMENTS:

- Notification system – **TO BE DEVELOPED**
- Reference Lists – **EXISTING**
- Risk Assessment Protocol – **AVAILABLE FOR MANY SPECIES AND GROUPS OF ORGANISMS**
- Early Detection and Rapid Response Protocol – **EXISTING, MMA MODEL**
- Early Detection and Rapid Response Action Recording System – **TO BE DEVELOPED**

PROGRAM INSTRUMENTS:

- Legal framework to enable the execution of rapid response actions – **LACKING FOR FAUNA SPECIES**
- Definition of priority areas – **CRITERIA FOR LOCATING ENDANGERED SPECIES, COMPLEMENTED WITH HABITATS, UNDER DEVELOPMENT**
- Contingency Plans for escapes – **TO BE DEVELOPED**
- Training – **ALREADY STARTED**

DEFINITION OF PRIORITY AREAS



Ocorrência de *Petunia reitzii* e *Ulex europaeus* em área periurbana de Urupema – SC.

Endangered	Invasive
<i>Petunia reitzii</i>	<i>Ulex europaeus</i>
<i>Petunia reitzii</i>	<i>Salix x rubens</i>
<i>Petunia reitzii</i>	<i>Ligustrum lucidum</i>
<i>Smallanthus araucariophilus</i>	<i>Salix x rubens</i>
<i>Smallanthus araucariophilus</i>	<i>Pinus taeda</i>
<i>Pavonia renifolia</i>	<i>Sus scrofa</i>
<i>Eryngium falcifolium</i>	<i>Pinus sp.</i>
<i>Elaphoglossum dutrae</i>	<i>Pinus sp.</i>

Training



**Online theoretical stage of DPRR course -
16/07 to 28/08 de 2024**



**Practical stage of the course on DPRR in the São Joaquim
National Park – SC – 17 and 18/10 de 2024**



EDRR - Biodiversity Emergency

- Requires structure available for emergency actions (short period of time) (Ex.: South Africa – 12 hours; MAPA system for notifiable diseases – 12 hours)
- Maximizes opportunities to eradicate IAS soon
- after their introduction – minimizes risks of impacts on biodiversity and ecosystem services
- Reduces future costs by preventing the spread of biological invasions



Realization



ABEMA

Associação Brasileira de Entidades Estaduais de Meio Ambiente

Sponsors

codex

SCCON
GEOSPATIAL

SOS MATA
ATLÂNTICA

Fundação
GrupoBoticário



CDP
BIOLOGICAL DIVERSITY ACTION

The Nature
Conservancy
Brasil

VALE

MINISTÉRIO DO
MEIO AMBIENTE E
MUDANÇA DO CLIMA

GOVERNO FEDERAL
BRASIL
UNIÃO E RECONSTRUÇÃO